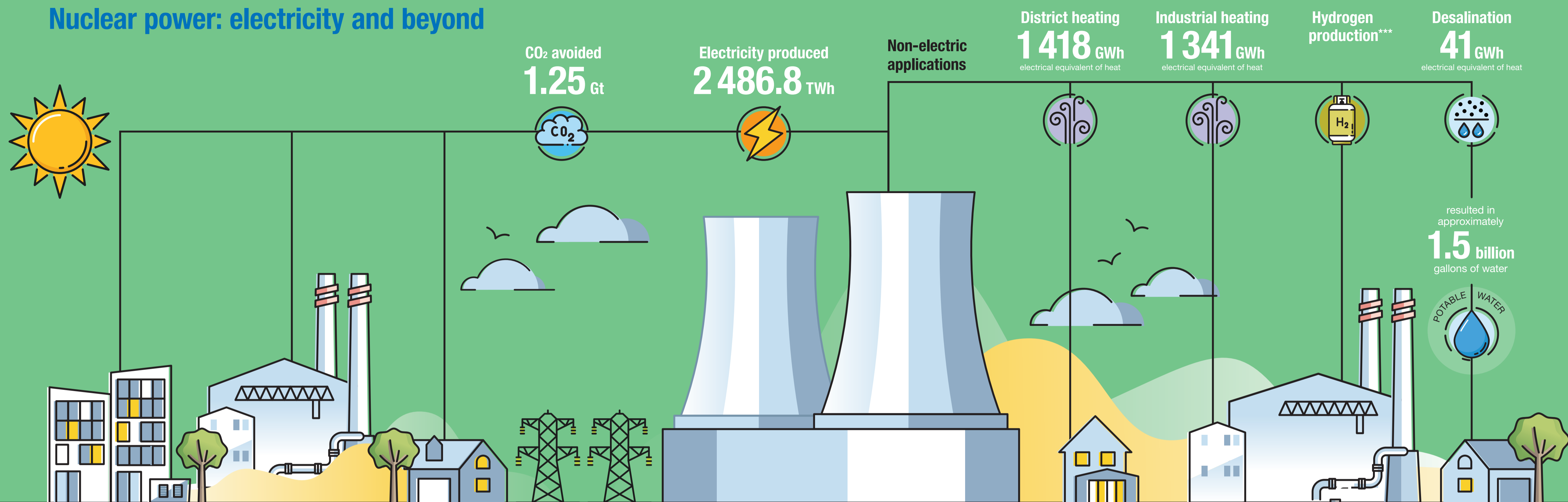


Nuclear Power Status 2022

Nuclear power: electricity and beyond



Reactors in operation**

393.8 GW(e) total net capacity

438 reactors

Reactors under construction

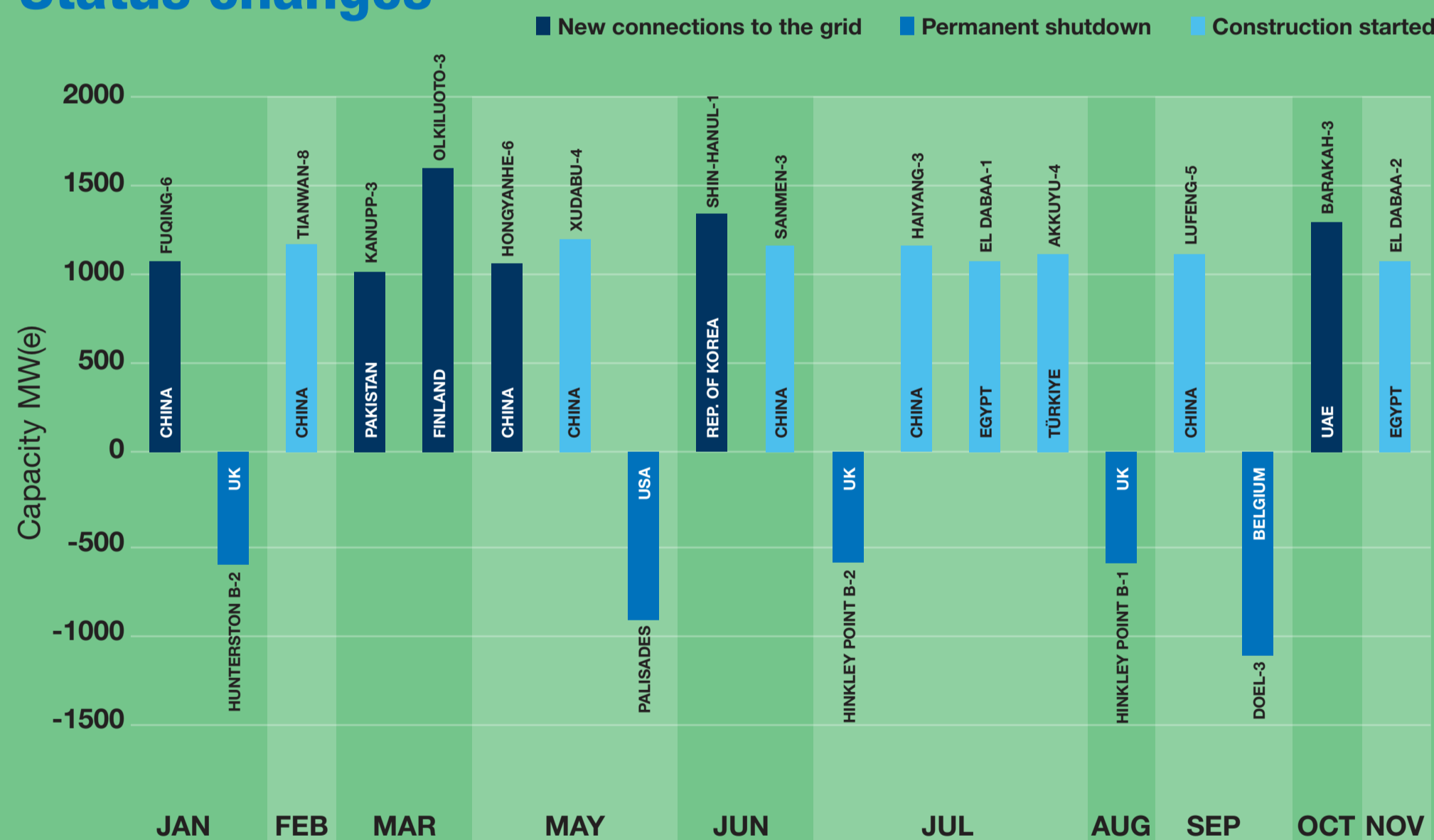
59.3 GW(e) total net capacity

58 reactors

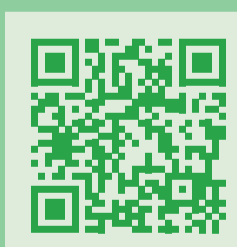
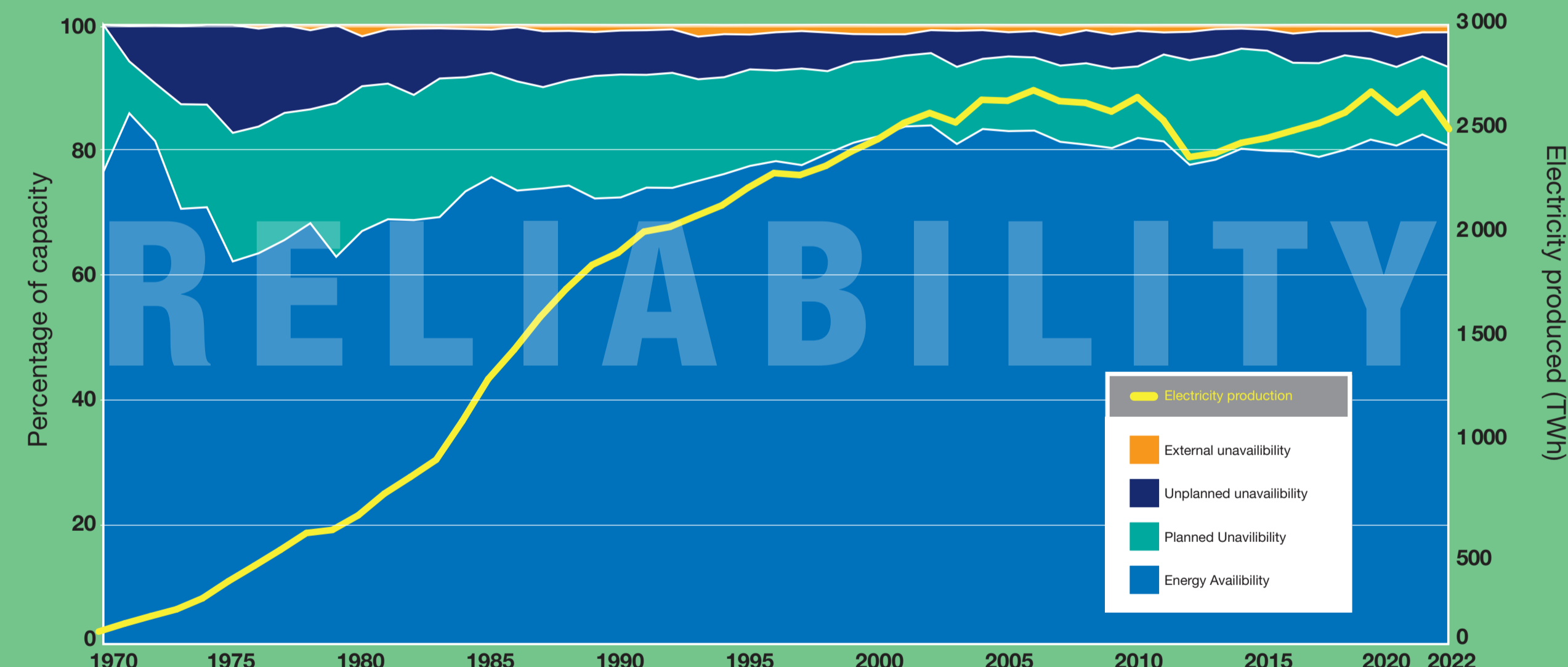
Operating experience

19 764 reactor-years of operation (cumulative)

Status changes

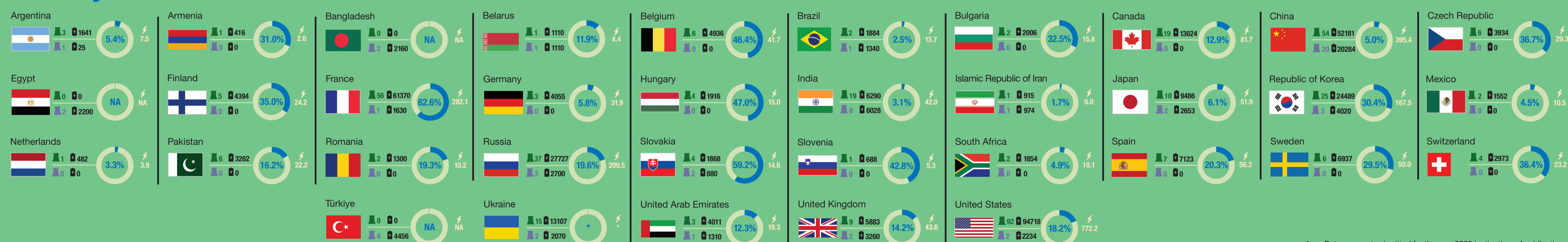


Nuclear power performance



Nuclear power data and statistics

Country statistics



Taiwan, China: 3 reactors, 2859 MW(e) in operation; 0 reactors under construction; 22.9 TWh electricity supplied, 9.1% nuclear share.

* Data were not submitted for the year 2022 by the time of publication.
NA Not Applicable



Power Reactor Information System
PRIS

GW(e) – Gigawatt electric TWh – Terawatt hour GWh – Gigawatt hour Gt – Gigatonne

** The total includes data for reactors where operation remained suspended during the year 2022: India (4 reactors; 639 MW (e)) and Japan (23 reactors; 22 193 MW (e)).
*** Data not available.

www.iaea.org/pris